

Aristo[®] Feed 3004

Optimum welding solutions



U6



MA25



U8₂

Sturdy design with galvanized metal casing for use in tough environments. Electronically controlled feeding gives accurate and stable arc. The 4-wheel feeder mechanism with grooves in both feed roll and pressure roll gives stable feeding and low wear on the wire, all to avoid operational disturbance.

The feeders are available with either 30 mm diameter rollers for wires 0.6 to 1.6 mm in Steel, Stainless and 1.0 to 1.6 mm in Aluminium.

Choose your level of control. Multiple panel options with U6, U82 and the new MA25 panel specialized for Steel and Aluminium applications.

- New drive motor offers more torque for improved arc starts, more consistent speed and less noise
- Redesigned drive rolls and feed mechanism for more positive feeding performance and reduced risk of wire shavings
- Short Circuit Termination (SCT) technology sharpens the wire at the end of each weld to promote better arc starts
- Feed 3004 can be equipped with a counter balance arm, lifting eye or a wheel kit for increased mobility
- TrueArcVoltage™ system measures the correct arc voltage at the contact tip (together with ESAB torches)

Industry

- General Industrial Fabrication
- Energy
- Windtowers
- Transportation
- Railcars
- Mining
- Mobile Machinery
- Steel Industry
- Ship/Barge Building
- Offshore Oil

Visit esab.com for more information.

Specifications	
Supply Voltage	42 VAC
Supply Frequency	50/60 Hz
Wire Feed Speed Range	0.8 – 25.0 m/min
Wire Spool Capacity	18 (30**) kg
Max Spool Diameter	300 (440**) mm
Dimensions , Lx W x H	690 x 275 x 420
Weight	15 kg
Approvals	CE
Wire Diameter Range:	
Mild Steel	0.6 – 1.6 mm
Stainless Steel	0.6 – 1.6 mm
Aluminium	1.0 – 1.6 mm
Cored	0.9 – 1.6 mm

** For P/N 0459233880

Panel Functions				
	MA25 Pulse Steel/Aluminium	U6	Aristo U8₂	Aristo U8₂ Plus
QSet™	●	●	●	●
Amperage Target Setting	●	●	●	●
2/4 stroke	●	●	●	●
Creep Start	●	●	●	●
Hot Start	●	●	●	●
Crater Filling	●	●	●	●
Adjustable Burn-back Time	●	●	●	●
Gas Pre/Post Flow	●	●	●	●
Digital V/A Meter	●	●	●	●
Gas Purge/Wire Inching		●	●	●
Memory Set	3	10	255	255
Create Own Synergic Lines	ESAT*	ESAT*	USB	USB
Pre-programmed Synergic Lines	54/30	60	92	>230
Synergic Pulse	●	●	●	●
SuperPulse™				●
Limit Editor (set and measured values)			●	●
Production Statistics				●
Auto Save Mode				●

* ESAB Service Tool

Ordering Information

Aristo® Feed 3004 (MA25 Steel)	0460526672
Aristo® Feed 3004 (MA25 Aluminium)	0460526670
Aristo® Feed 3004 (U8 ₂) Encl -10 pole	0460526881
Aristo® Feed 3004 U6, Encl -10 pole	0460526886
Aristo® Feed 3004w (MA25 Steel)	0460526673
Aristo® Feed 3004w (MA25 Aluminium)	0460526671
Aristo® Feed 3004w, (U8 ₂) Encl -10 pole	0460526891
Aristo® Feed 3004w, U6, Encl -10 pole	0460526896
Aristo® U8 ₂ , complete incl. holder	0460820880
Aristo® U8 ₂ Plus, complete incl. holder	0460820881
Control cable extension for U8 ₂ 7.5 m	0460877891

Options & Accessories

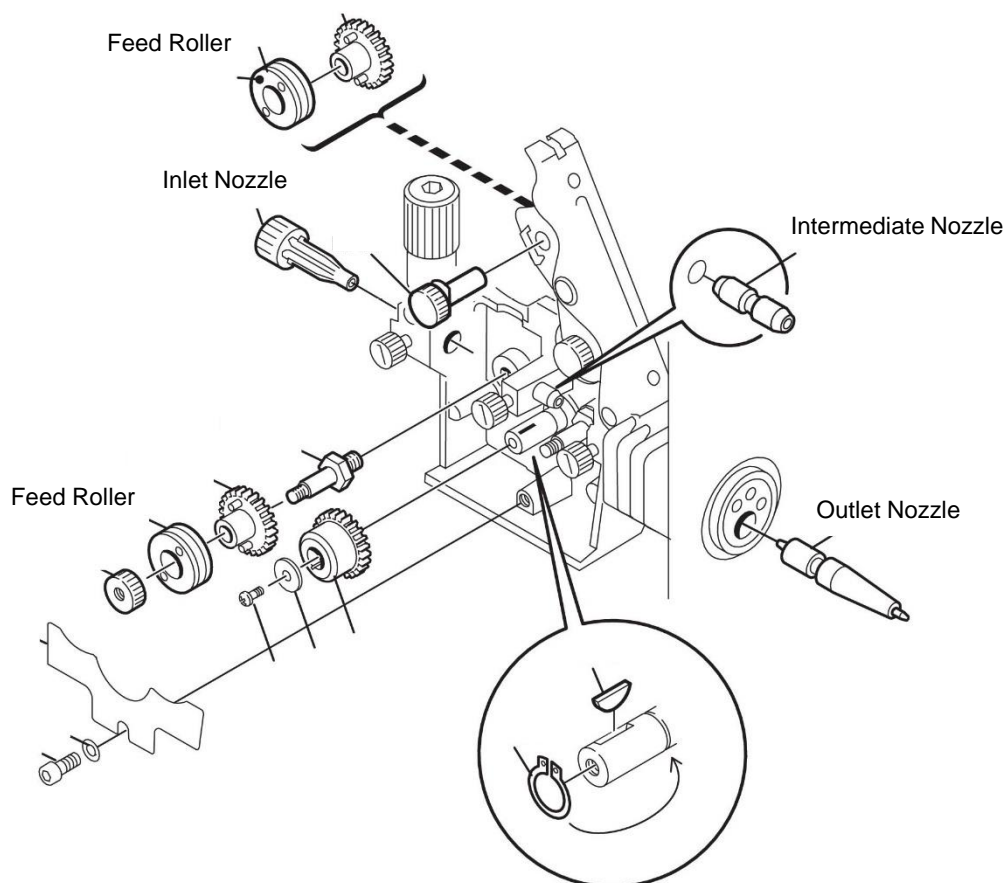
Wheel Kit, front wheels turn	0458707880	
Wheel Kit, all wheels turn	0458707881	
Strain Relief for Welding Torch	0457341881	
Strain Relief for Interconnection Cables	0459234880	
Lifting Eye	0458706880	
Adapter For 440 mm Spool	0459233880	
Adapter For 5 kg Spool	0455410001	
Guide Pin	0458731880	
Turning Piece 360°	0458703880	
Quick Connector Marathon Pac™	F102440880	
Counter Balance Arm	0458705880	
Stabilizer Kit for Counter Balance Arm	0460946880	
Spool Cover, Steel	0459431880	
Remote Control MTA1 CAN	0459491880	
Remote Control MT1 10Prog. CAN	0459491882	
Remote Interconnection Cable 5 m, 12p *	0459554880	
Remote Interconnection Cable 5 m, 10p	0459960880	
Remote Interconnection Cable HD 5 m, 10p	0459960980	
Remote Adapter Kit MXH™ PP	0459681881	
Remote Adapter Kit Miggy-/ Railtrac	0459681880	
MXH 300/400w PP connection kit	0459020883	
Interconnection Cables	Gas-Cooled	Liquid-Cooled
Interconnection Cable 70 mm ² 10p, 1.7 m	0459528780	0459528790
Interconnection Cable 70 mm ² 10p, 5.0 m	0459528781	0459528791
Interconnection Cable 70 mm ² 10p, 10.0 m	0459528782	0459528792
Interconnection Cable 70 mm ² 10p, 15.0 m	0459528783	0459528793
Interconnection Cable 70 mm ² 10p, 25.0 m	0459528784	0459528794
Interconnection Cable 70 mm ² 10p, 30.0 m	0459528785	0459528795
Interconnection Cable 95 mm ² 10p, 1.7 m	0459528980	0459528990

* For P/N 0460526881

Wear and Spare Parts

Feed Roller V Groove for Fe/SS/C 0.6-0.8 mm	0459052001
Feed Roller V Groove for Fe/SS/C 0.8-0.9 mm	0459052002
Feed Roller V Groove for Fe/SS/C 0.9-1.0 mm	0459052003*
Feed Roller V Groove for Fe/SS/C 1.4-1.6 mm	0459052013
Feed Roller V-K Groove for C 0.9-1.2 mm	0458825001
Feed Roller V-K Groove for C 1.2-1.4mm	0458825002
Feed Roller V-K Groove for C 1.6 mm	0458825003
Feed Roller U Groove for Al 0.8-1.0 mm	0458824001
Feed Roller U Groove for Al 1.0-1.0 mm	0458824002*
Feed Roller U Groove for Al 1.2-1.6 mm	0458824003
Inlet Nozzle Ø 2mm for Fe/SS/AIC 0.6-1.6mm	0156602001
Inlet Nozzle Ø 3mm for Fe/SS/AIC 0.6-1.6mm	0455049001
Intermediate Nozzle for Fe/SS/C 0.6-1.6 mm	0455072002
Intermediate Nozzle for Al 0.8-1.6 mm	0456615001
Outlet Nozzle for Fe/SS/C 0.6-1.6 mm	0469837880
Outlet Nozzle for Al 0.8-1.6 mm	0469837881

Fe = Mild steel; SS = Stainless Steel, Al = Aluminum, C = Cored Wire *As Delivered
 For complete list of wear and spare parts please see the manual.



XA00183820 Rev3 – 01/2017 ESAB reserves the right to alter specifications without prior notice



ESAB / esab.com

