

SENTINEL A50™

Revolutionary high performance automatic welding helmet



Years of welding have trained you to know exactly what you need in a hood: crucial comfort, large lens, and next generation technology. Every special operation needs special equipment that gets the job done, and when it comes to your helmet, SENTINEL is worn by the best.

- Revolutionary Shell Design. High Impact Resistance Nylon
- Halo™ Headgear. Ergonomic, infinitely-adjustable 5 point head gear provides extreme comfort and balance. Low-profile design, central pivot point allows for maximum head clearance while helmet is in the up position.
- 100 x 60mm 1/1/1/2 – 5-13 ADF
- Externally activated Grind Button. Shade 3 Grind Mode
- Colour touch screen control panel
- 8 separate memory settings
- Replacing spare parts made easy. Front cover lens replaceable with in 10 seconds, without removing helmet (front loaded)

Visit esab.com for more information.

Application Range

- Oxyfuel Gas Welding
- Oxygen Cutting
- Grinding
- Low Amperage TIG Rated: ≥ 2 amps (DC); ≥ 2 amps (AC)
- Stick Welding (SMAW); TIG DC&AC; TIG Pulse DC;
- TIG Pulse AC; MIG/MAG/CO₂; MIG/MAG Pulse;
- Plasma Arc Cutting (PAC); Plasma Arc Welding (PAW);
- Air Carbon Arc Cutting (CAC-A); Oxyfuel Gas Welding
- (OFW); Oxygen Cutting (OC); Grinding



Halo™ comfort 5 point harness (Front view)

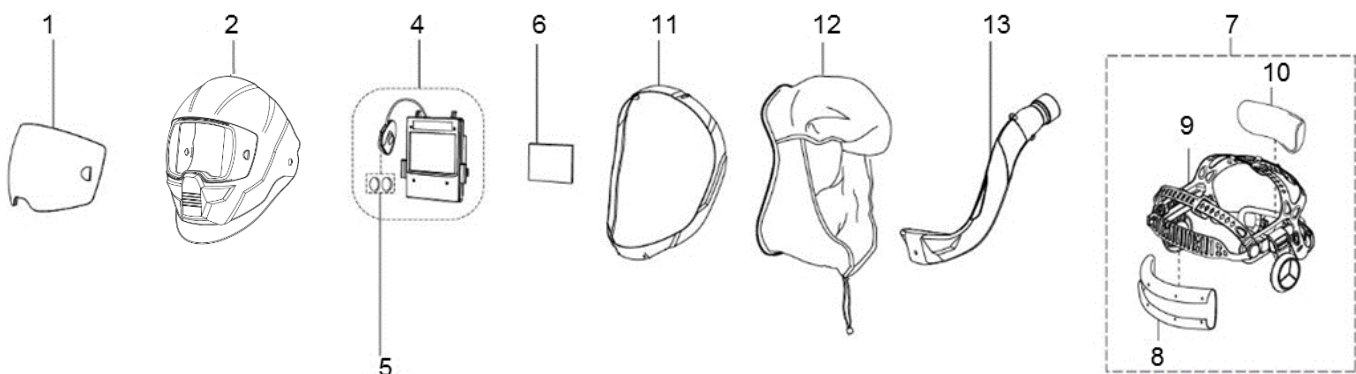


High optical class ADF, with colour touch screen interface

Specifications	
Cartridge Dimensions	133 x 114 x 9 mm
Viewing Area	100 x 60 mm (3.93" x 2.36")
Lens Shade	DIN 5-8/9-13
Power Supply	Solar cell plus battery replaceable. (2*CR2450 lithium). Alerts when low battery.
Sensors	4
Switch Time	1/25,000 s. from Light to Dark
Classification	1/1/1/2
Standards	DIN plus, CE, EN175, EN 379, EN166, ANSI Z87.1, CSA Z94.3, AS/NZS 1338.1

Ordering Information	
Sentinel A50	0700 000 800
Sentinel A50 Air	0700 000 801

Wear and Spare Parts	
1. Front Cover Lens Clear	0700 000 802
1. Front Cover Lens Amber	0700 000 803
2. Sentinel Helmet Shell	0700 000 804
4. Auto-Darkening Filter (Including 2 x CR2450 lithium battery)	0700 000 806
5. 2 x CR2450 lithium battery	0700 000 807
6. Inside Cover Lens	0700 000 808
7. Headgear Assembly (Including Sweat Bands)	0700 000 809
8. Front Sweat Band	0700 000 810
9. Headgear	0700 000 811
10. Rear Sweat Band	0700 000 812
11. Face Seal Bracket (For A50 Air)	0700 000 813
12. Face Seal (For A50 Air)	0700 000 814
13. Air Duct (For A50 Air)	0700 000 815



ESAB / esab.com

