

SENTINEL™ A50 for Air

Revolutionary high performance automatic welding helmet



Years of welding have trained you to know exactly what you need in a hood: crucial comfort, large lens, and next generation technology. Every special operation needs special equipment that gets the job done, and when it comes to your helmet, SENTINEL™ is worn by the best.

- Revolutionary Shell Design. High Impact Resistance Nylon
- Halo™ Headgear. Ergonomic, infinitely-adjustable 5 point head gear provides extreme comfort and balance. Low-profile design, central pivot point allows for maximum head clearance while helmet is in the up position.
- 100 x 60mm 1/1/1/2 – 5-13 ADF
- Externally activated Grind Button. Shade 4 Grind Mode
- Colour touch screen control panel

Visit esab.com for more information.

Welding Process

- Oxy Fuel Cutting
- Plasma Cutting
- Grinding
- Welding, GMAW (MIG/MAG)
- Welding, GTAW (TIG)
- Welding, PAW - Plasma Arc Welding
- Welding, SMAW/MMA (Stick)



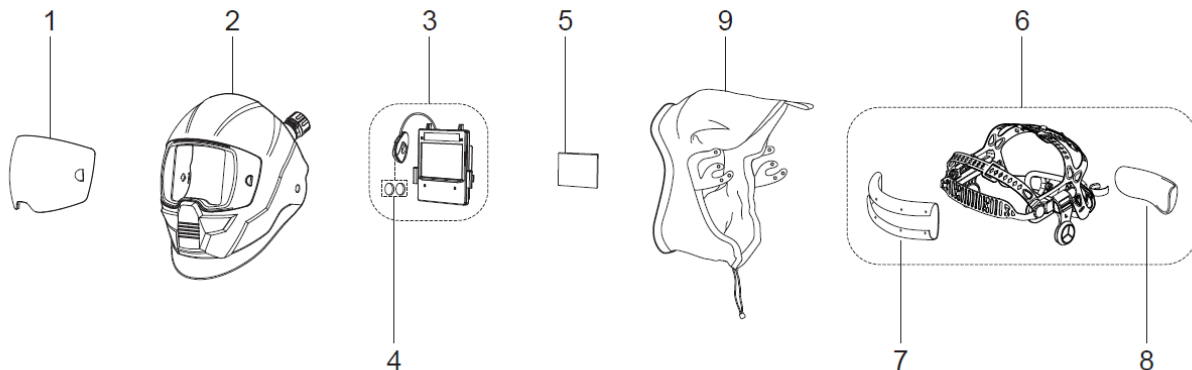
SENTINEL A50 Air can be combined with Eco Air and Aristo® Air PAPP units

SENTINEL™ A50 for Air

Specifications	
Cartridge Dimensions	133 x 114 x 9 mm
Viewing Area	100 x 60 mm (3.93" x 2.36")
Lens Shade	DIN 5-8/9-13
Power Supply	Solar cell plus battery replaceable. (2*CR2450 lithium). Alerts when low battery.
Sensors	4
Switch Time	1/25,000 s. from Light to Dark
Classification	1/1/1/2
Standards	DIN plus, CE, EN175, EN 379, EN166, ANSI Z87.1, CSA Z94.3, AS/NZS 1338.1
Weight	830 g (1.8 lbs.)

Ordering Information	
Sentinel A50	0700000800
Sentinel A50 for Air	0700000801

Wear and Spare Parts		
1	Front Cover Lens Clear	0700000802
1	Front Cover Lens Amber	0700000803
2	SENTINEL A50 Air shell with air duct	0700000813
3	Auto-Darkening Filter (Incl. 2 x CR2450 lithium battery)	0700000806
4	2 x CR2450 lithium battery	0700000807
5	Inside Cover Lens	0700000808
6	Headgear for A50 Air (including sweatbands)	0700000805
7	Front Sweat Band	0700000810
8	Rear Sweat Band	0700000812
9	Face Seal (For A50 Air)	0700000814



ESAB / esab.com

