

Warrior™ Feed 304

User friendly and robust feeder



The Warrior™ Feed 304 brings you the same benefits as its partner power supply; simple functionality, rugged durability and outstanding performance for 0.8 – 1.6 mm wire. Also available in a water cooled version Warrior™ Feed 304w.

- Standard 4-roll drive provides good feedability.
- Sun-friendly display and easy-to-use controls (remote voltage, gas purge, inch wire, WFS) trigger lock, and slow run-in make configuration easy.
- Practical spool cover for use in situations when you need to protect the wire.
- Short Circuit Technology (SCT) functionality which sharpens the wire at the termination of a weld to promote better arc starts, eliminate clipping wire.

Visit esab.com for more information.

Industry

- Civil Construction
- Energy
- Industrial and General Fabrication
- Pipeline
- Repair and Maintenance
- Ship/Barge Building



Specifications

| | |
|--|--|
| Supply Voltage | 42 VAC |
| Supply Frequency | 50/60 Hz |
| Power Requirement | 252 VA |
| Welding Output at 60% Duty Cycle | 500 A |
| Welding Output at 100% Duty Cycle | 400 A |
| Wire Feed Speed | 1.5 – 25.0 m/min (4.9–82 ft/min) |
| Wire Spool Capacity | 18 kg (39.7 lbs) |
| Max Spool Diameter | 300 mm (440 mm*) 12 in (17 in*) |
| Wire Dimensions Mild Steel Stainless Steel Aluminum Cored Wire | 0.6 – 1.6 0.8 – 1.6 1.0 – 1.6 0.9 – 1.6 |
| Operating Temperature | -10° to +40°C (+14° to +104°F) |
| Dimensions, L x W x H | 675 x 265 x 418 mm (26.6 x 10.4 x 16.5 in) |
| Weight | 14.5 kg (31.8 lbs) |
| Standards | CE, CSA |
| Enclosure Class | IP23 |

* When used with adapter 0459233880

Ordering Information

| | |
|--------------------|------------|
| Warrior™ Feed 304 | 0465250880 |
| Warrior™ Feed 304w | 0465250881 |

Options & Accessories

| | |
|---|------------|
| Wheel Kit, front wheels turn | 0458707880 |
| Wheel Kit, all wheels turn | 0458707881 |
| Guide Pin Extension Kit, feeder | 0465508880 |
| Strain Relief for Welding Torch | 0457341881 |
| Strain Relief bracket for Interconnection Cable set | 0459234880 |
| Lifting Eye | 0458706880 |
| Adapter For 440 mm Spool | 0459233880 |
| Quick Connector Marathon Pac™ | F102440880 |
| Trolley 4-wheel | 0465510880 |
| Counter Balance Arm * | 0458705880 |
| Stabilizer Kit for Counter Balance Arm | 0460946880 |
| Remote Kit | 0465451880 |
| Remote Control M1 | 0459491895 |
| Remote Interconnection Cable M1, 5 m | 0459553880 |
| Remote Adapter Kit Miggy-/ Railtrac | 0465451881 |

* Requires trolley 0460565880 and Stabilizer kit 0461310880.

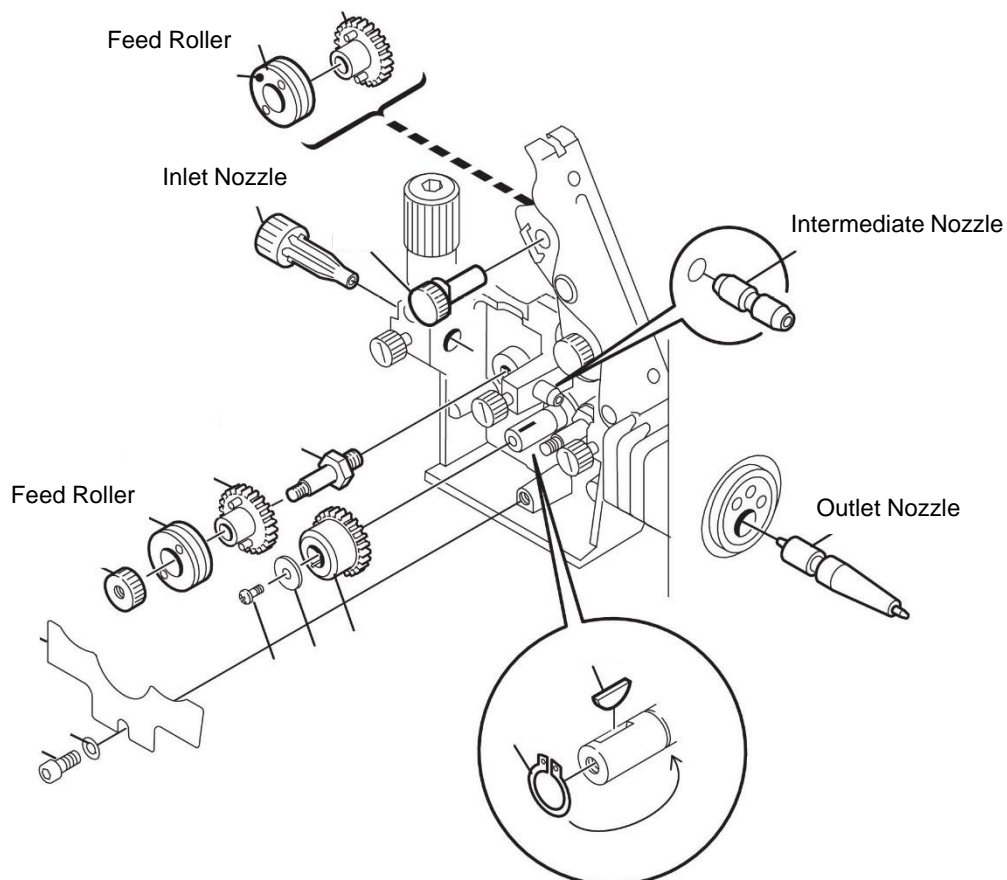
Options & Accessories

| | |
|--|------------|
| MXH™ 400w PP Torch, 6 m | 0700200015 |
| MXH™ 400w PP Torch, 10 m | 0700200016 |
| MXH™ 400w PP Torch 45°, 10 m | 0700200019 |
| MXH™ 300 PP Torch, 6 m | 0700200017 |
| MXH™ 300 PP Torch, 10 m | 0700200018 |
| MXH™ 300 PP Torch 45°, 10 m | 0700200020 |
| Interconnection Cables - 70mm2, Gas-Cooled, 2.0m | 0459836880 |
| Interconnection Cables - 70mm2, Gas-Cooled, 5.0m | 0459836881 |
| Interconnection Cables - 70mm2, Gas-Cooled, 10.0m | 0459836882 |
| Interconnection Cables - 70mm2, Gas-Cooled, 15.0m | 0459836883 |
| Interconnection Cables - 70mm2, Gas-Cooled, 25.0m | 0459836884 |
| Interconnection Cables - 70mm2, Gas-Cooled, 25.0m | 0459836885 |
| Interconnection Cables - 70mm2, Liquid-Cooled, 2.0m | 0459836890 |
| Interconnection Cables - 70mm2, Liquid-Cooled, 5.0m | 0459836891 |
| Interconnection Cables - 70mm2, Liquid-Cooled, 10.0m | 0459836892 |
| Interconnection Cables - 70mm2, Liquid-Cooled, 15.0m | 0459836893 |
| Interconnection Cables - 70mm2, Liquid-Cooled, 25.0m | 0459836894 |
| Interconnection Cables - 70mm2, Liquid-Cooled, 35.0m | 0459836895 |
| Interconnection Cables - 95mm2, Gas-Cooled, 2.0m | 0459836980 |
| Interconnection Cables - 95mm2, Gas-Cooled, 5.0m | 0459836981 |
| Interconnection Cables - 95mm2, Gas-Cooled, 10.0m | 0459836982 |
| Interconnection Cables - 95mm2, Gas-Cooled, 15.0m | 0459836983 |
| Interconnection Cables - 95mm2, Gas-Cooled, 25.0m | 0459836984 |
| Interconnection Cables - 95mm2, Gas-Cooled, 35.0m | 0459836985 |
| Interconnection Cables - 95mm2, Liquid-Cooled, 2.0m | 0459836990 |
| Interconnection Cables - 95mm2, Liquid-Cooled, 5.0m | 0459836991 |
| Interconnection Cables - 95mm2, Liquid-Cooled, 10.0m | 0459836992 |
| Interconnection Cables - 95mm2, Liquid-Cooled, 15.0m | 0459836993 |
| Interconnection Cables - 95mm2, Liquid-Cooled, 25.0m | 0459836994 |
| Interconnection Cables - 95mm2, Liquid-Cooled, 35.0m | 0459836995 |

Wear and Spare Parts

| | |
|---|------------|
| Feed Roller V Groove for Fe/SS/C 0.6-0.8 mm | 0459052001 |
| Feed Roller V Groove for Fe/SS/C 0.8-0.9 mm | 0459052002 |
| Feed Roller V Groove for Fe/SS/C 0.9-1.0 mm | 0459052003 |
| Feed Roller V Groove for Fe/SS/C 1.4-1.6 mm | 0459052013 |
| Feed Roller V-K Groove for C 0.9-1.2 mm | 0458825001 |
| Feed Roller V-K Groove for C 1.2-1.4mm | 0458825002 |
| Feed Roller V-K Groove for C 1.6 mm | 0458825003 |
| Feed Roller U Groove for Al 0.8-1.0 mm | 0458824001 |
| Feed Roller U Groove for Al 1.0-1.0 mm | 0458824002 |
| Feed Roller U Groove for Al 1.2-1.6 mm | 0458824003 |
| Inlet Nozzle Ø 2 mm for Fe/SS/AIC 0.6-1.6mm | 0156602001 |
| Inlet Nozzle Ø 3 mm for Fe/SS/AIC 0.6-1.6mm | 0455049001 |
| Inlet Nozzle Ø 16/5 for Al 0.6-1.6 mm | 0156602001 |
| Intermediate Nozzle for Fe/SS/C 0.6-1.6 mm | 0455072002 |
| Intermediate Nozzle for Al 0.8-1.6 mm | 0456615001 |
| Outlet Nozzle for Fe/SS/C 0.6-1.6 mm | 0469837880 |
| Outlet Nozzle for Al 0.8-1.6 mm | 0469837881 |

Fe = Mild steel; SS = Stainless Steel, Al = Aluminum, C = Cored Wire
 For complete list of wear and spare parts please see the manual.



ESAB / esab.com

